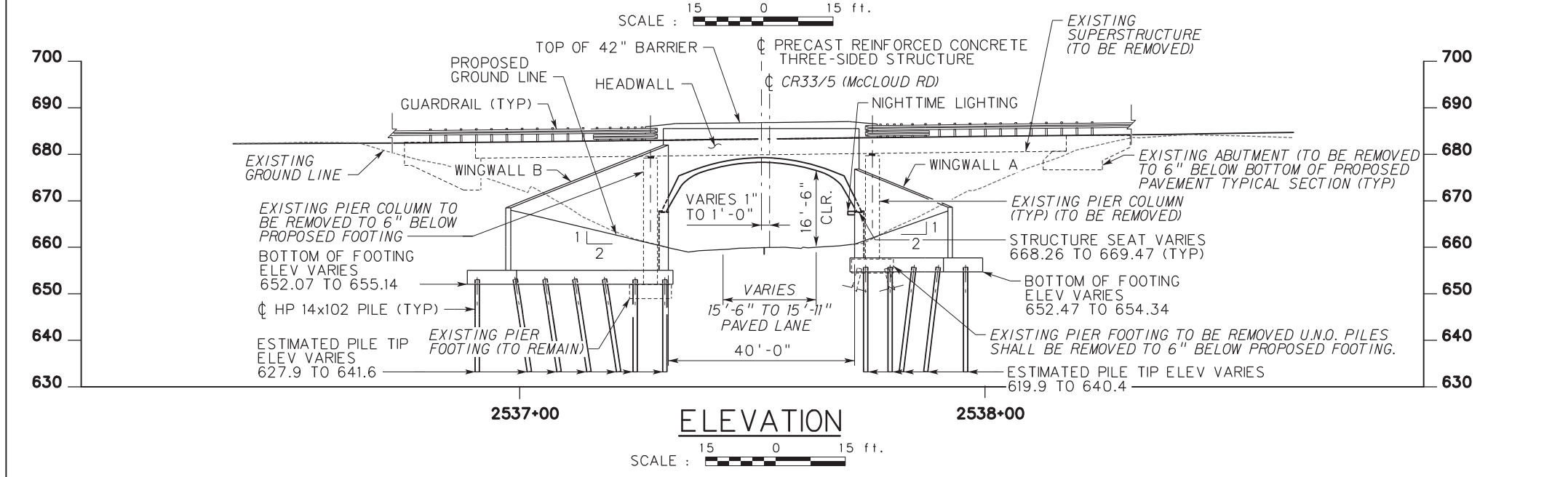
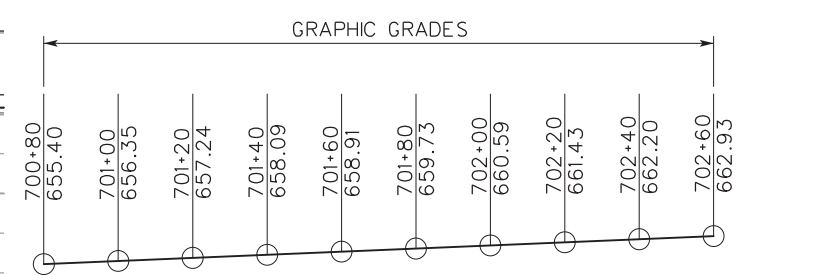
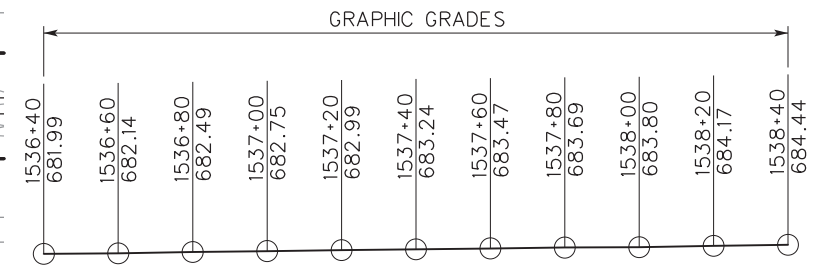
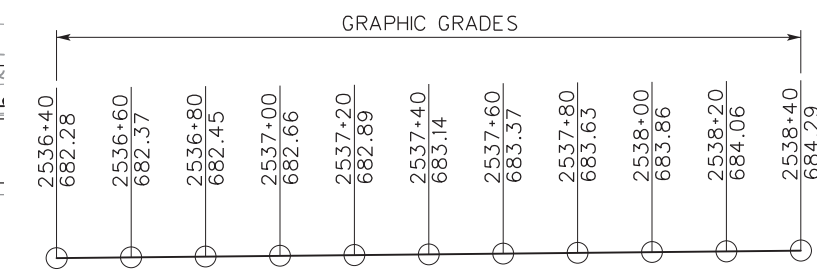
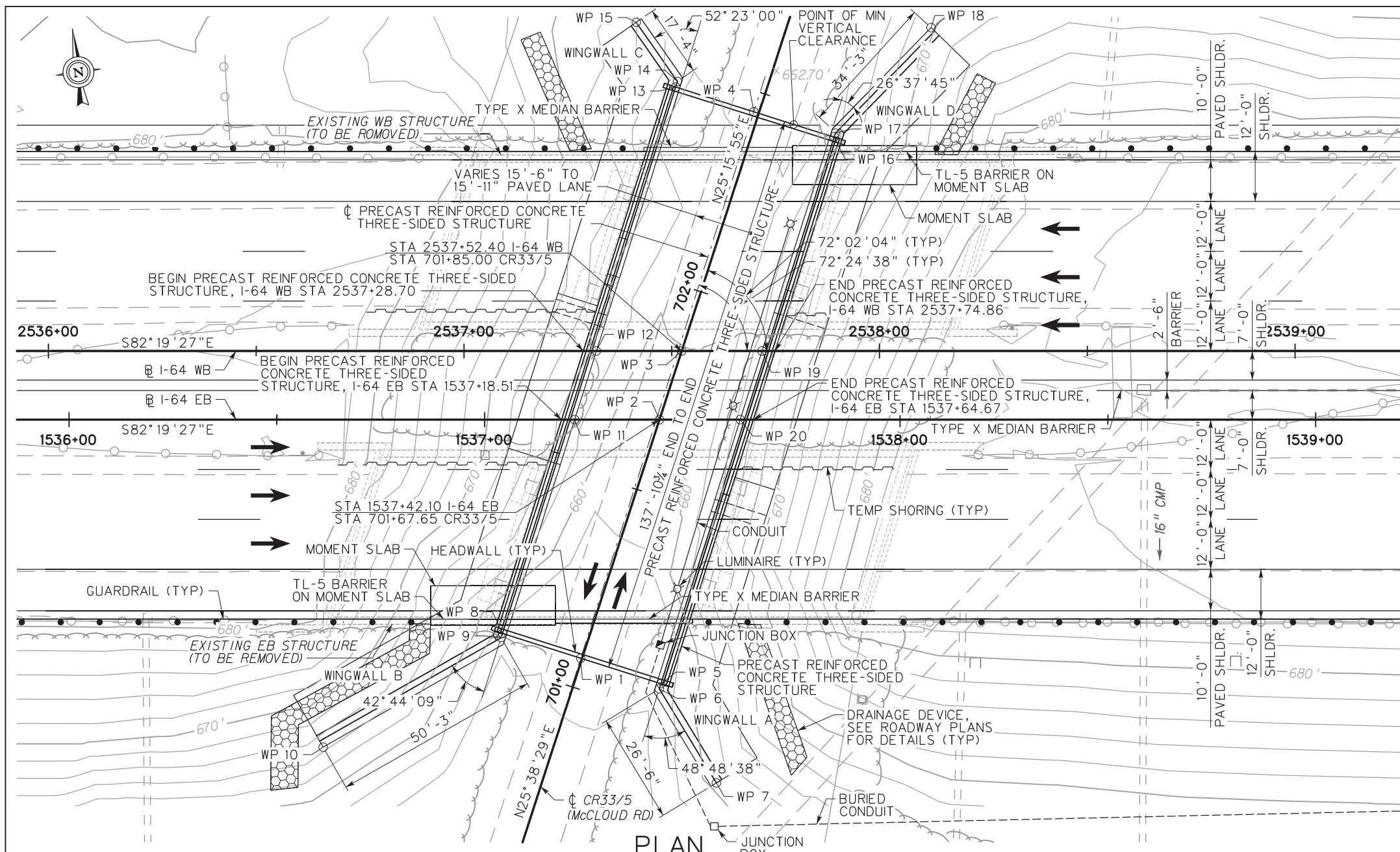


Public Roads Div.	State Dist. No.	State Project No.	Federal Project No.	Fiscal Year	County	Sheet No.	Total Sheets
W. V.	01	U340-64-41.37 00	NFA-2317(012)	2020	PUTNAM		



- NOTES:**
- FOR GENERAL NOTES, SEE SHEETS B4 AND B5
 - FOR INDEX OF SHEETS, SEE SHEET B3.
 - FOR PROPOSED CONTOURS, TEST BORINGS, TRAFFIC DATA, AND ADDITIONAL INFORMATION, SEE SITUATION PLAN, SHEET B51.

REVISION NUMBER	SHEET NUMBER	REVISION	DATE	BY

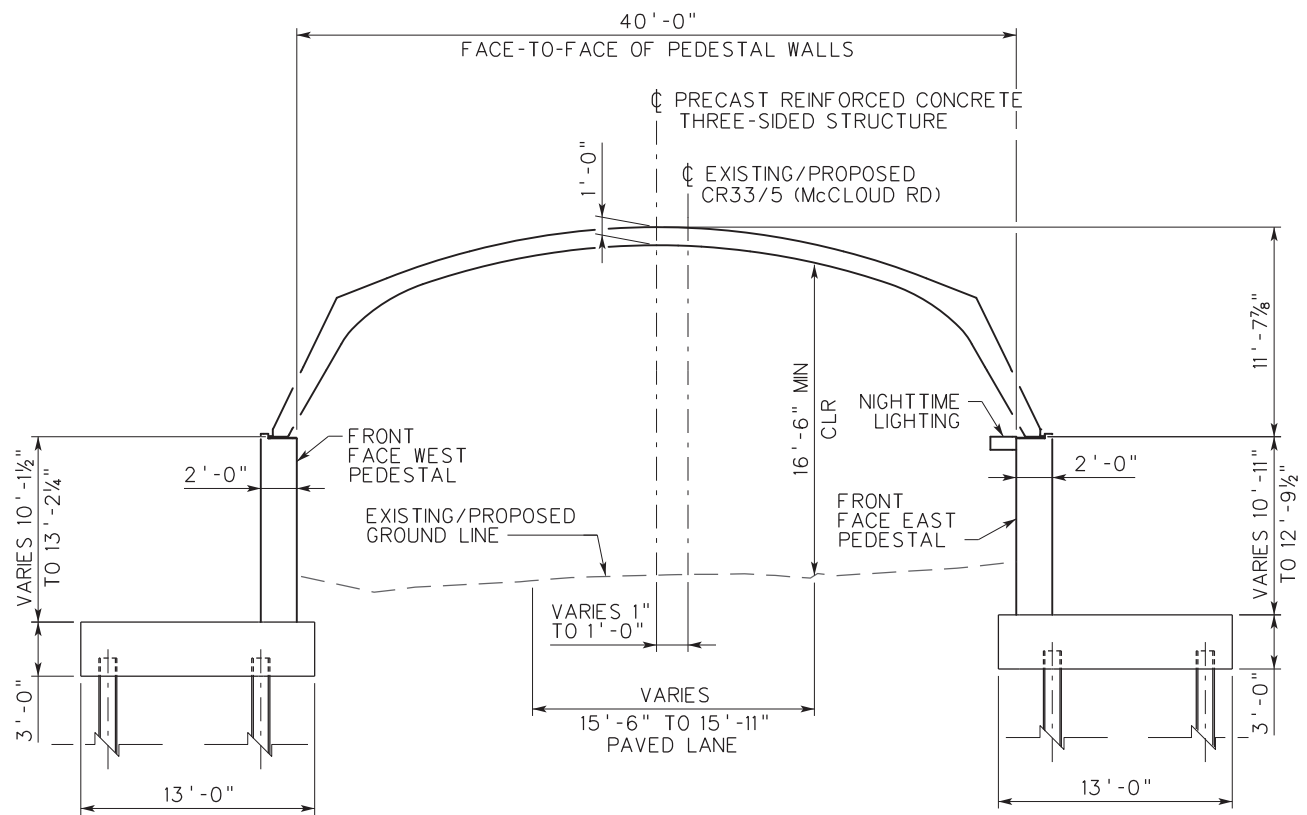
THE WEST VIRGINIA DEPARTMENT OF TRANSPORTATION
DIVISION OF HIGHWAYS

US35/I-64 I/C - NITRO I/C
I-64 OVER CR33/5
GENERAL PLAN AND ELEVATION

DESIGNED	JWP	DATE	12/20
DRAWN	JTB	DATE	12/20
CHECKED	SCN	DATE	12/20
CHECKED	SCN	DATE	12/20

HDR ENGINEERING, INC.
CONSULTING ENGINEERS
CHARLESTON, WV
681-341-6100

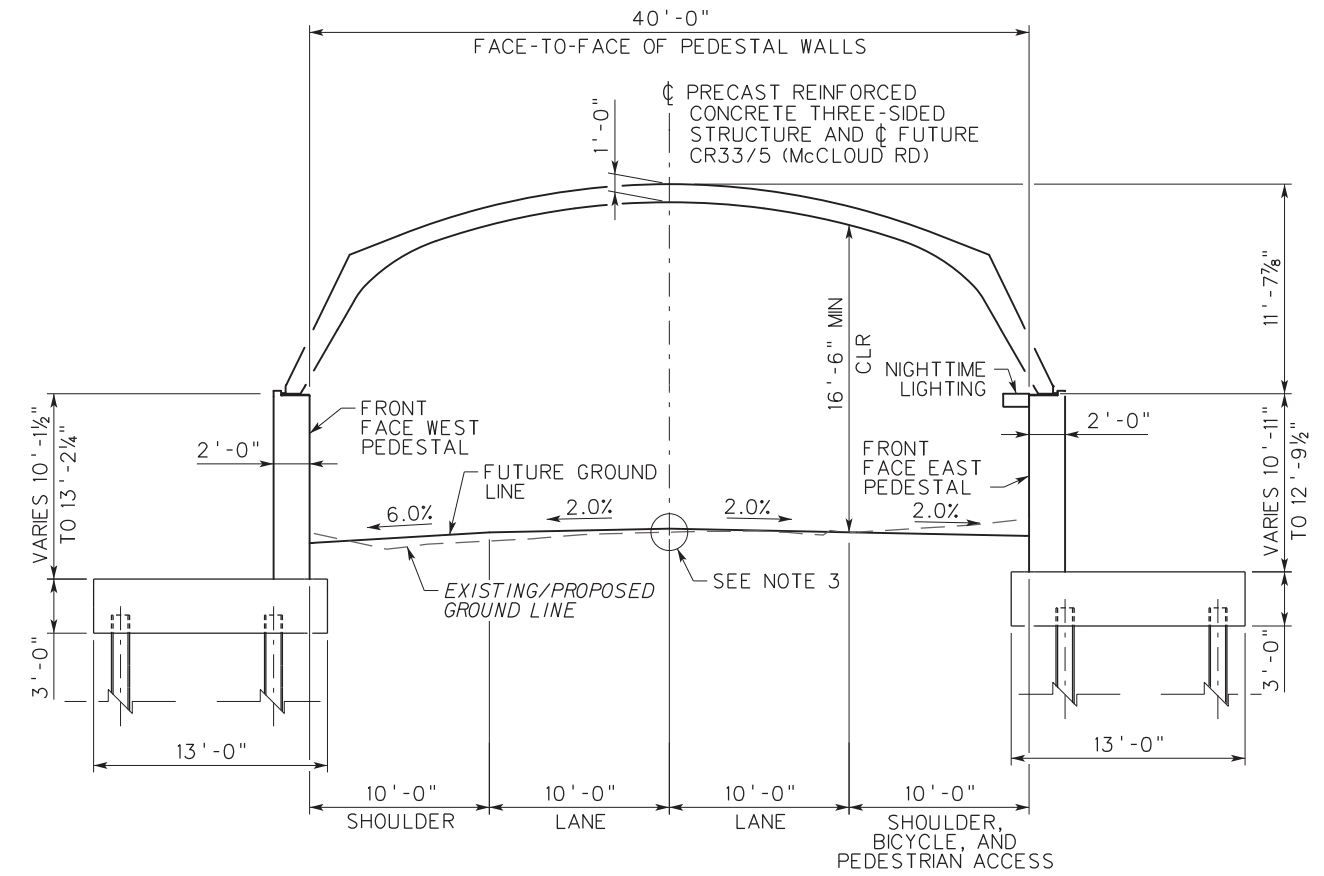
SHEET B1 of B61
BRIDGE NO. 11656



PROPOSED TYPICAL SECTION

(ALONG \dot{C} PRECAST REINFORCED CONCRETE THREE-SIDED STRUCTURE)

SCALE : $\frac{3}{16}'' = 1'-0''$



FUTURE TYPICAL SECTION

(ALONG \dot{C} PRECAST REINFORCED CONCRETE THREE-SIDED STRUCTURE)

SCALE : $\frac{3}{16}'' = 1'-0''$

NOTES:

- FOR GENERAL NOTES, SEE SHEETS B4 AND B5.
- FUTURE TYPICAL SECTION IS CONCEPTUAL IN NATURE AND IS NOT TO BE CONSTRUCTED AS PART OF THIS CONTRACT.
- VERTICAL PROFILE OF FUTURE TYPICAL SECTION SET AT $\frac{1}{4}''$ ABOVE EXISTING/PROPOSED GROUND LINE AT \dot{C} PRECAST REINFORCED CONCRETE THREE-SIDED STRUCTURE.

REVISION NUMBER	SHEET NUMBER	REVISION	DATE	BY

THE WEST VIRGINIA DEPARTMENT OF TRANSPORTATION
DIVISION OF HIGHWAYS
US35/I-64 I/C - NITRO I/C
I-64 OVER CR33/5
TYPICAL SECTIONS

DESIGNED	DATE
JWP	03/21
DRAWN	DATE
JTB	03/21
CHECKED	DATE
TLP	03/21



HDR ENGINEERING, INC.
CONSULTING ENGINEERS
CHARLESTON, WV
681-341-6100

SHEET
B2 of B61
BRIDGE NO.
11656

RFC 06/29/2021

C:\pwworking\1010129288\1\64-BR02-TSC.DWG DD:MM/YY THM